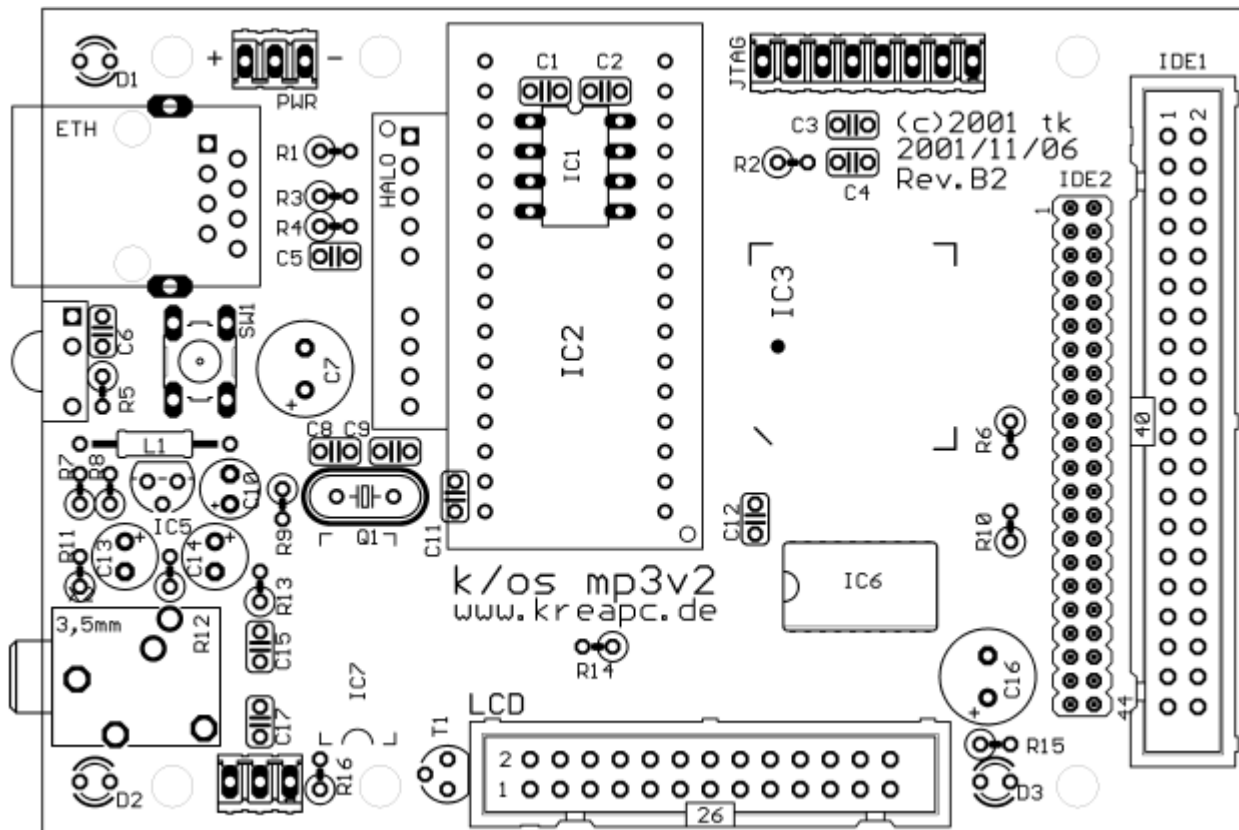


# Partlist

## PCB Layout B2



Partlist exported from C:/code/mp3v2/pcb/RevB2/mp3v2.sch at 10.11.2001 16:40:20

Qty	Value	Parts	Order Code
1		SW1	Reichelt, PHAP 3301B
1		OUT	Reichelt, PS25/3G
1		PWR	Reichelt, PS25/3G
1		JTAG	Reichelt, PS25/8G
1		LCD	Conrad, #187399
1	1M	R9	Reichelt, 1/4W 1M
2	1k	R10, R14	Reichelt, 1/4W 1K
1	4k7	R2	Reichelt, 1/4W 4.7K
1	5k6	R6	Reichelt, 1/4W 5.6K
1	10µ	C10	Reichelt, rad 10/25
1	10µ	L1	Reichelt, SMCC 10µ
2	10k	R5, R13	Reichelt, 1/4W 10K
1	10n	C5	Reichelt, Z5U-2.5 10n
1	12.288 MHz or 24.576 MHz	Q1	Reichelt 12,288-HC18 or Segor, Q 24,576-GW
2	15R	R11, R12	Reichelt, 1/4W 15R

2	33p	C8, C9	Reichelt, Kerko 33p
2	47R	R3, R4	Reichelt, 1/4W 47R
1	74LS245DW	IC6	Reichelt, SMD LS 245
2	100μ	C13, C14	Reichelt, SM100/16rad
9	100n	C1, C2, C3, C4, C6, C11, C12, C15, C17	Reichelt, Z5U-2.5 100n
1	150R	R1	Reichelt, 1/4W 150R
1	180R	R16	Reichelt, 1/4W 180R
1	210R	R8	Reichelt, 1/4W 210R
2	220μ	C7, C16	Reichelt, rad 220/16
2	330R	R7, R15	Reichelt, 1/4W 330R
1	BC547C	T1	Reichelt, BC 547B
1	BLUE	D2	Reichelt, LED 3mm ST-blau
2	GREEN	D1, D3	Reichelt, LED 3mm ST-grün
1	HALO	HALO	Beck, Ethernet Transformer
1	IDE2.5	IDE2	Conrad, 2x #739219
1	IDE3.5	IDE1	Reichelt, WSL40G
1	JACK8SH	ETH	Reichelt, MEBP 8-8G
1	LM317LZ	IC5	Reichelt, LM317 TO92
1	PG203J	X2	Reichelt, EBS 35
1	SC12	IC2	Beck, IPC@Chip SC12
1	TL 7705	IC1	Reichelt, TL 7705 DIP
1	TSOP1738	IC4	Reichelt, TSOP 1738
1	VS1001SOIC28	IC7	Segor, VS 1001k
1	ispLSI1016	IC3	Reichelt, ispLSI 1016-LJ

## Recommended Components

- You definitely want 0.5mm solder, and desoldering-wick to assemble the PCB.
- Soldering IC3 is much easier, if you use a SMD PLCC socket, Break out the inner plastic part of the socket before soldering.
  - Reichelt, SMD PLCC 44
- You'll need a 26pin cable and connector, if you want to use the graphic LCD.
  - Reichelt, PFL 26
  - Reichelt, 1m AWG 28-26G
- Don't forget to buy small distance nuts, if you want to mount a 2.5" HD directly on/under the PCB.
  - 4x Reichelt, DA 10mm
- You might want to buy a small 5V switching power supply.
  - Reichelt, PSA 15W-050, (Phihong 15W, 5V)
  - Reichelt, ADC120 (AC Power cord)
  - Reichelt, HEBLM 21

## Where to get the parts?

All parts can be ordered through the online shops of Reichelt, Segor, Conrad, and Beck automation.



- [www.segor.de](http://www.segor.de)
- [www.reichelt.de](http://www.reichelt.de)
- [www.conrad.de](http://www.conrad.de)
- [www.bcl-online.de](http://www.bcl-online.de)
- 2.5" Harddisk cables [www.kabelspezialist.de](http://www.kabelspezialist.de)

Please mail me, if some parts are not available, or you have problems with your order.